



Comprehensive Plan Update  
**COMMUNITY ENGAGEMENT SESSION**  
July 28, 2020

### A comprehensive plan...

- Is an official document developed through citizen input used to guide the physical development of a community
- Includes visions, goals, objectives, and policies for implementation
- Is *not* an ordinance

### The plan includes...

- Issues & Opportunities
- Housing
- Transportation
- Utilities & Community Facilities
- Agricultural, Natural, & Cultural Resources
- Economic Development
- Land Use (*current and future*)
- Intergovernmental Cooperation
- Implementation

## **Comprehensive Plan 2040**

### **It is being updated because...**

- **Current plan adopted in 2005**
- **Comprehensive Planning Law requires amendment at least once every 10 years**
- **Much has changed since current plan was developed**
- **Plan must provide tools to address those changes**

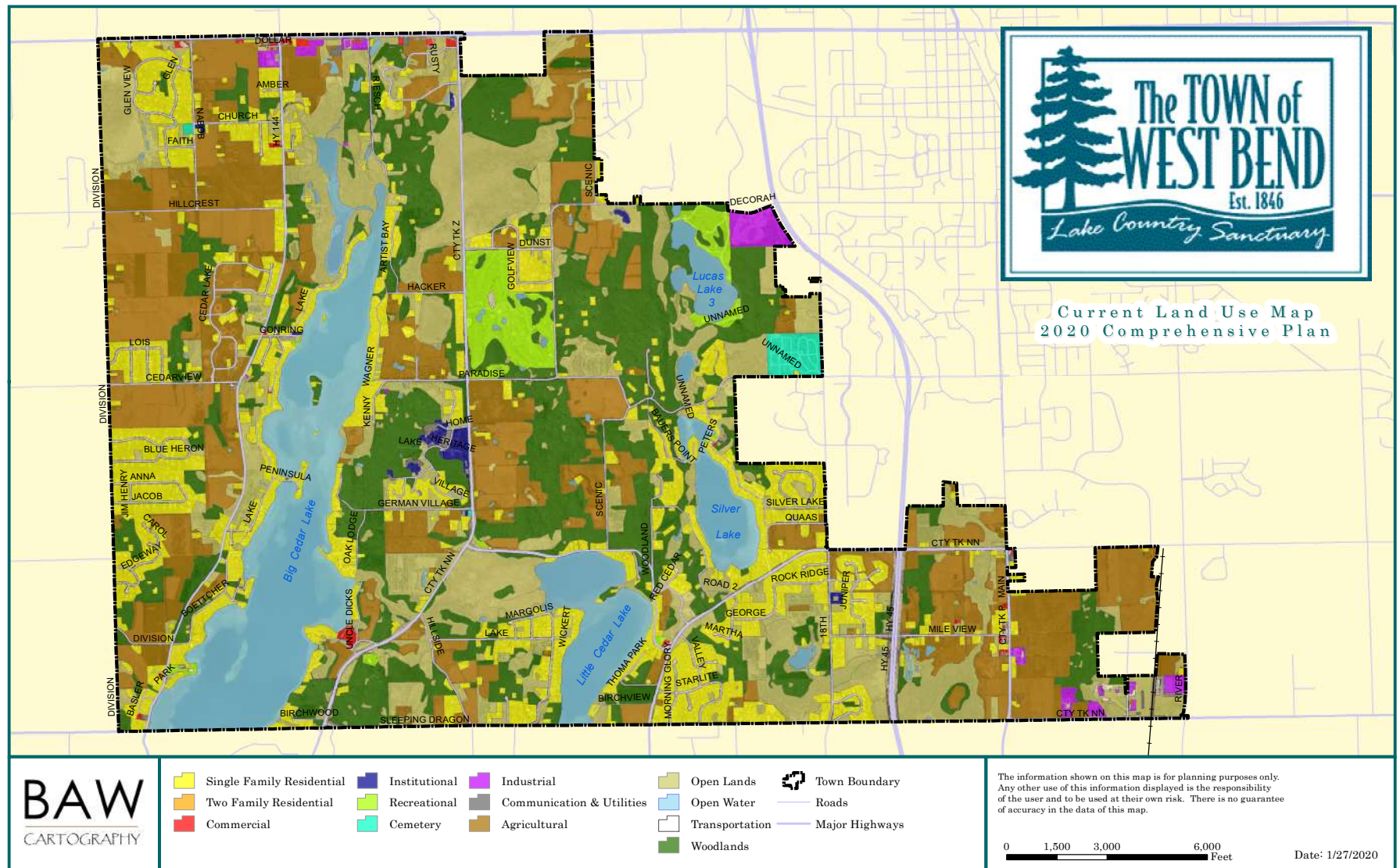
# 'Addendum vs. Rewrite'

- **Addendum:**
  - 'An addition to an existing document intended to supplement the original text'*
- **Lower cost, abbreviated time frame**
- **Less descriptive, more targeted**
- **Appropriate for 10-year update**
- **Current plan retained as reference text**



# Comprehensive Plan 2040

## Current & Future Land Use Maps



# **2005 COMP PLAN GOALS**

### Housing

- Permit limited residential development in the Town
- Encourage redevelopment of existing housing stock in the Lake District

### Transportation

- Maintain a safe and efficient transportation system in the Town



# **Utilities & Community Facilities**

- **Provide park and recreation areas throughout the Town**
- **Protect Town lakes and streams through stringent stormwater management practices**
- **Continue to provide Town residents with high-quality, efficient services, utilities and community facilities**

# **Agricultural, Natural, & Cultural Resources**

- **Protect environmental resources**

## **Economic Development**

- **Provide for limited commercial, retail and office development in select locations**
- **Mixed-use development shall be included within the commercial areas**

## **Intergovernmental Cooperation**

- **Establish cooperative planning with surrounding communities**

# **DEMOGRAPHIC PROFILE**

## Comprehensive Plan 2040

### Past Population

<u>Year</u>	<u>Population</u>	<u>Change</u>
1970	2,779	--
1980	3,588	29.1%
1990	4,165	16.1%
2000	4,834	16.1%
2010	4,774	-1.2%
2015	4,777	0%
2019 (est.)	4,690	

**Numeric change, 1970-2015 – 1,998**

**Percent change, 1970-2015 – 71.2%**

## Comprehensive Plan 2040

### Projected Population

<u>Year</u>	<u>Population</u>	<u>Change</u>
2015	4,777	--
2020	4,985	4.4%
2025	5,145	3.2%
2030	5,260	2.2%
2035	5,240	-0.4%
2040	5,130	-2.1%

**Numeric change, 2015-2040 – 353**

**Percent change, 2015-2040 – 7.4%**



# Population Comparisons, 2000-2015

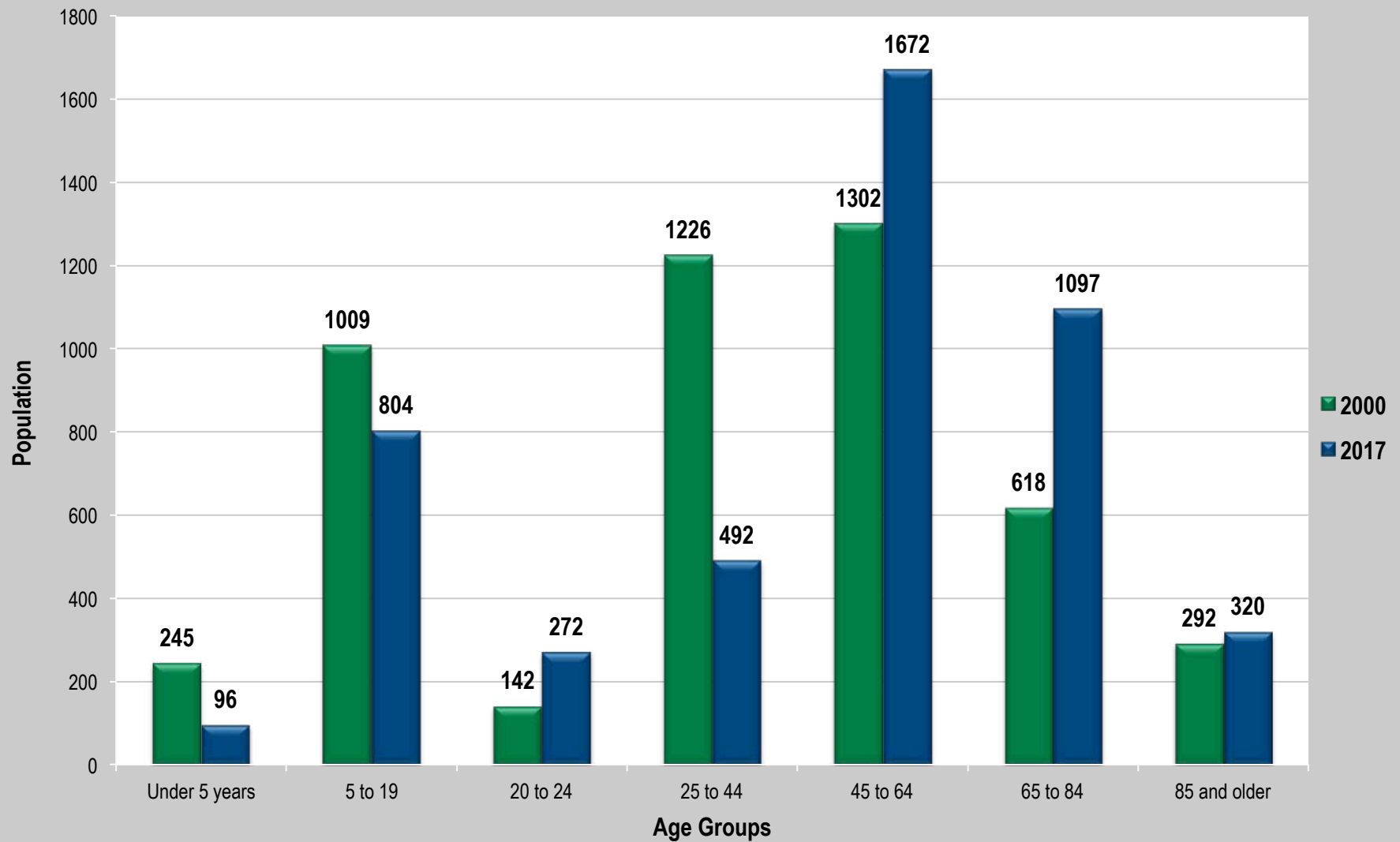
<u>Municipality</u>	<u>2000</u>	<u>2015</u>	<u>Change</u>
V. Slinger	3,901	5,235	34.2%
T. Wayne	1,727	2,185	26.5%
T. Jackson	3,516	4,340	23.4%
Washington Co.	117,496	133,486	13.6%
C. West Bend	28,152	31,599	12.2%
Wisconsin	5,363,715	5,753,324	7.3%
T. Trenton	4,440	4,743	6.8%
T. Barton	2,546	2,638	3.6%
T. Addison	3,341	3,459	3.5%
T. Polk	3,938	3,979	1.0%
<b>T. West Bend</b>	<b>4,834</b>	<b>4,777</b>	<b>-1.2%</b>
T. Hartford	4,031	3,587	-11.0%

# Population Comparisons, 2015-2040

<u>Municipality</u>	<u>2015</u>	<u>2040</u>	<u>Change</u>
V. Slinger	5,235	7,330	40.0%
T. Wayne	2,185	2,965	35.7%
T. Jackson	4,340	5,655	30.3%
Washington Co.	133,486	163,890	22.8%
C. West Bend	31,599	38,430	21.6%
T. Trenton	4,743	5,400	13.9%
Wisconsin	5,753,324	6,491,635	12.8%
T. Polk	3,979	4,395	10.5%
T. Addison	3,459	3,720	7.5%
<b>T. West Bend</b>	<b>4,777</b>	<b>5,130</b>	<b>7.47%</b>
T. Barton	2,638	2,765	4.8%
T. Hartford	3,587	3,630	1.2%

## Comprehensive Plan 2040

# Change in Population – Select Age Groups



## Comprehensive Plan 2040

### T. West Bend - Proj. Households, 2015-2040

<u>Year</u>	<u>Pop.</u>	<u>HHs</u>	<u>HH Size</u>
2015	4,777	1,827	2.47
2020	4,985	1,919	2.44
2025	5,145	1,992	2.41
2030	5,260	2,038	2.39
2035	5,240	2,176	2.37
2040	5,130	2,211	2.35

**Change in Pop., 2015-2040**

**7.4%**

**Change in Total HHs, 2015-2040**

**21.0%**

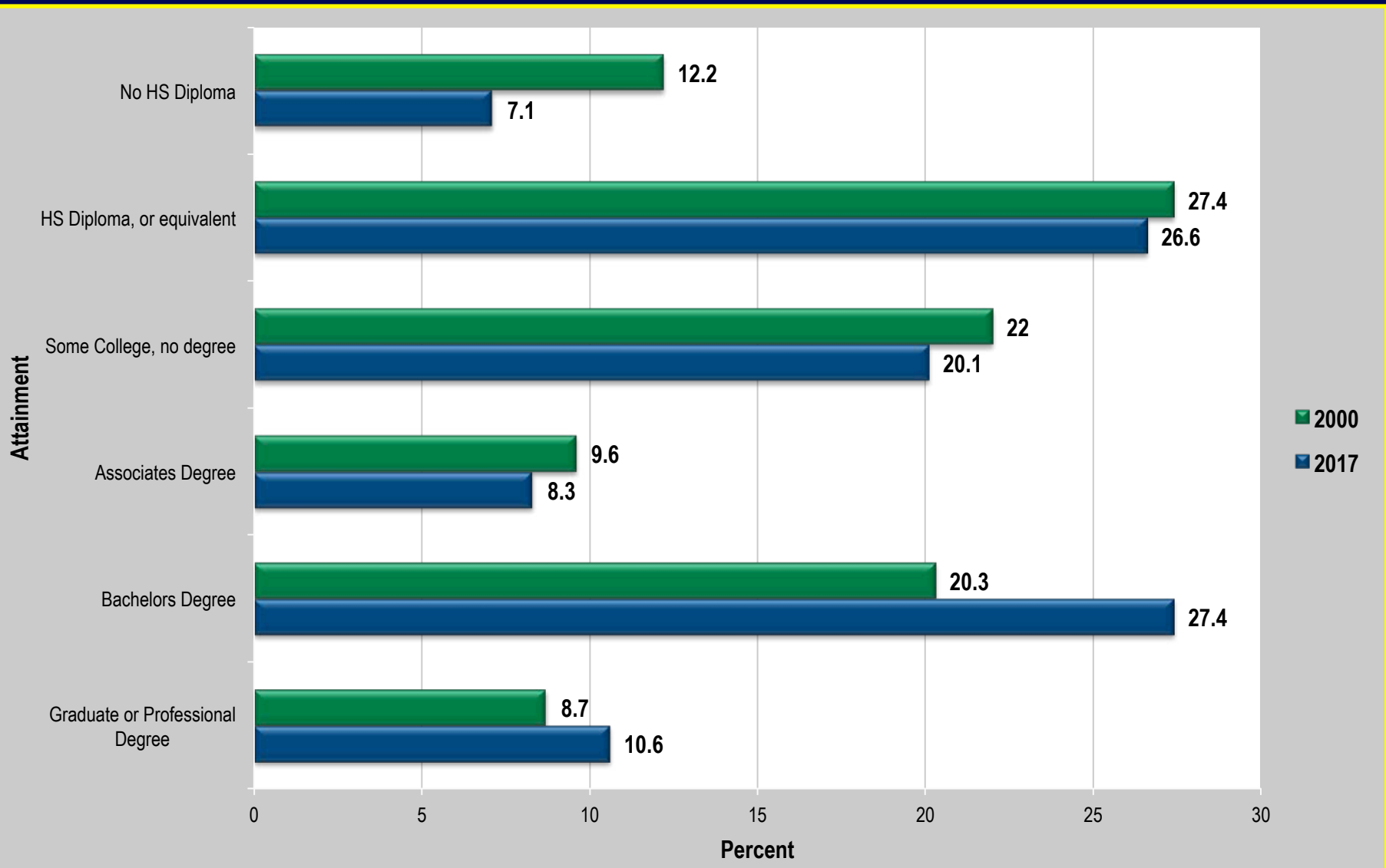
# Housing Stock

	<u>2000</u>	<u>2017</u>
▪ <b>Total Units</b>	1,975	2,100
▪ <b>Occupied</b>	1,611	1,955
▪ <b>Median Value</b>	\$218,300	\$308,600
▪ <b>Median Value Increase:</b>	41%	
▪ <b>Year Built:</b>		
- 2000 to present:	291	
- 1960 to 1999:	1,225	
- 1959 and earlier:	439	



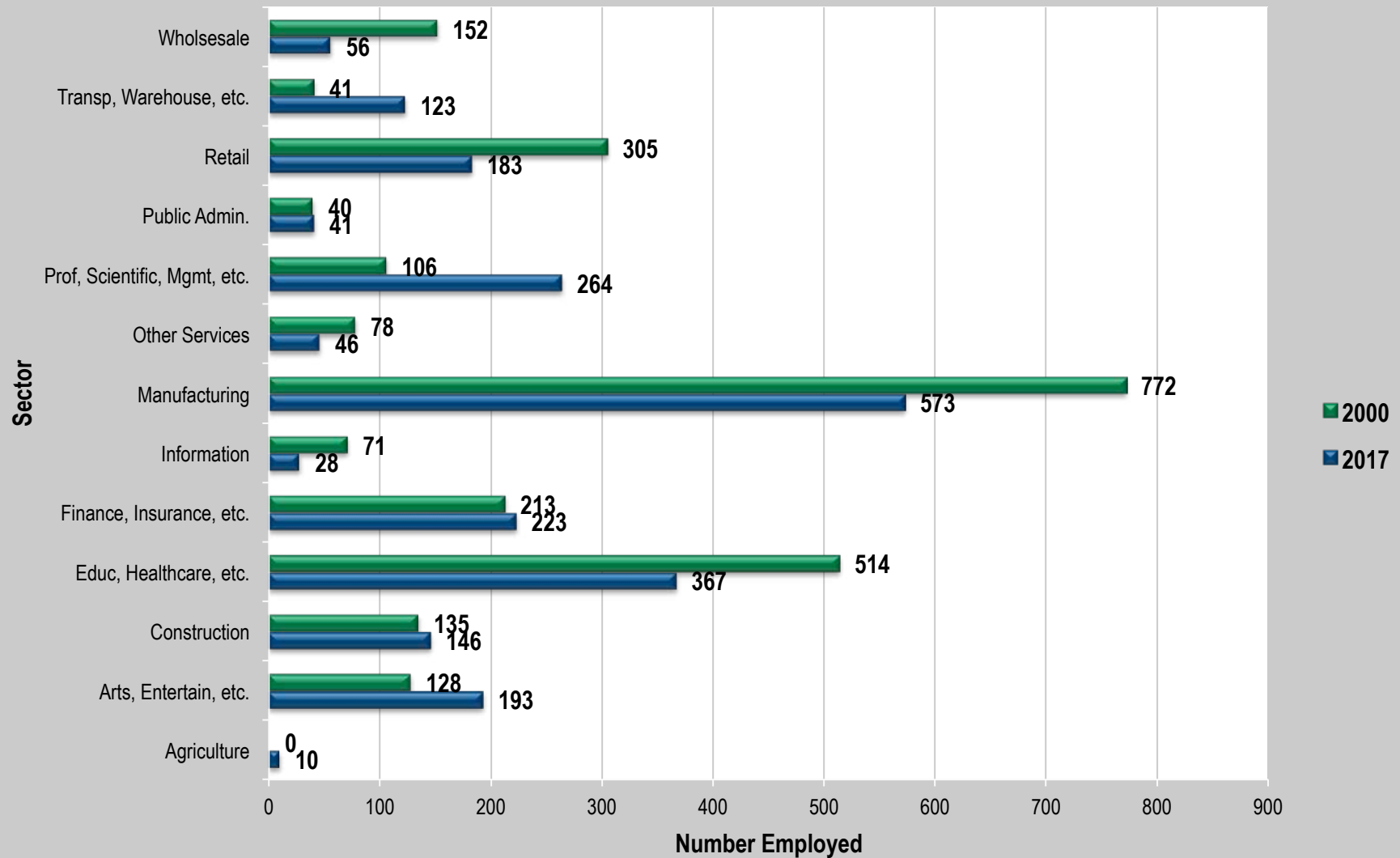
## Comprehensive Plan 2040

# Educational Attainment Age 25 Years and Older



## Comprehensive Plan 2040

# Employment by Industry Sector



# VISIONING

# What are the Town's needs during the next two decades?

- Who lives here in 2030, 2040
- What kind of housing do they want?
- What are their transportation needs?
- Where do they spend their money?
- What do they do for relaxation and recreation?

## Comprehensive Plan 2040



#1. In addition to current forms, **housing** should include...





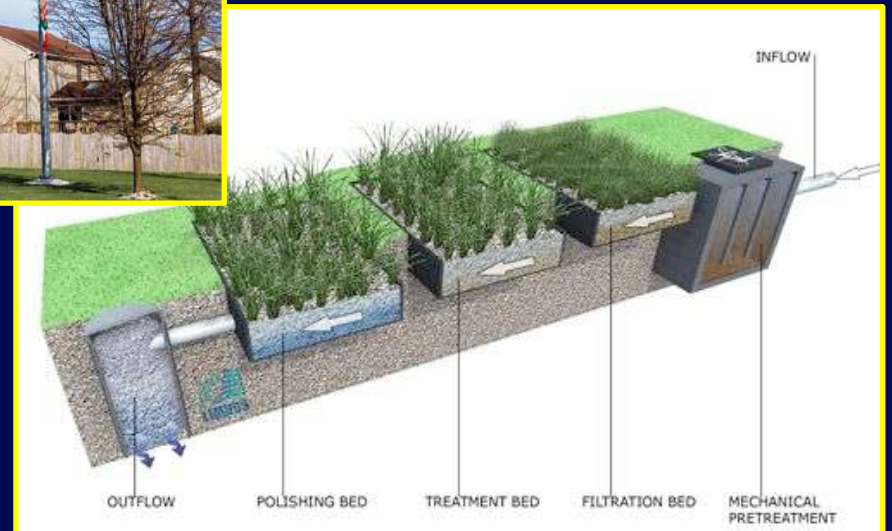
## Comprehensive Plan 2040

### #2. The **transportation system** will include...





## Comprehensive Plan 2040



**#3. Utilities & Facilities will include...**



## Comprehensive Plan 2040



**#4. Economic development**  
should include...



# Comprehensive Plan 2040

## #5. Parks and recreation will include...





## Comprehensive Plan 2040

### #6. We must **preserve**...



# Tentative Next Steps

- **Prepare First Draft Comp Plan – August / September**
- **Present First Draft Comp Plan – September**
- **Comp Plan Review – October / November**
- **Public Hearing – December**
- **Town Board Adoption – January**

A wide-angle photograph of a calm body of water, likely a lake, during the 'blue hour' of sunset or sunrise. The sky is filled with soft, horizontal clouds in shades of blue, purple, and orange. The sun is low on the horizon, creating a bright glow and reflecting its light across the water's surface. A dark, silhouetted shoreline with trees and buildings is visible in the distance. The overall mood is peaceful and serene.

**Thank You!**